



IRIS

Certification

INTERNATIONAL RAILWAY INDUSTRY STANDARD (IRIS) - THE NEW GLOBAL QUALITY STANDARD FOR THE RAILWAY INDUSTRY

Date & time: 22 September 2006, 10.00 - 12.00 pm

Place: InnoTrans – Messe Berlin, Hall 7, Room Europa

Organiser: UNIFE



Presentation

HASLERRail

Agenda:

- ✦ Company profile
- ✦ Products and applications
- ✦ Reasons why we introduced the IRIS Quality Standard
- ✦ Difficulties
- ✦ Further steps
- ✦ Tips and hints

Your data and security is our top priority

- **Privately owned Swiss company**

- ✦ Located in Berne, Switzerland, since 1887
- ✦ System supplier for onboard recording and control devices, indicators and wheel sensors
 - ✦ HaslerRail has a worldwide customer base in the railway industry
- ✦ 80 employees in Berne
- ✦ 30 engineers for R&D as well as for project management
- ✦ 1 Quality manager (Mr. André Hasler)

... Sophisticated Applications ...

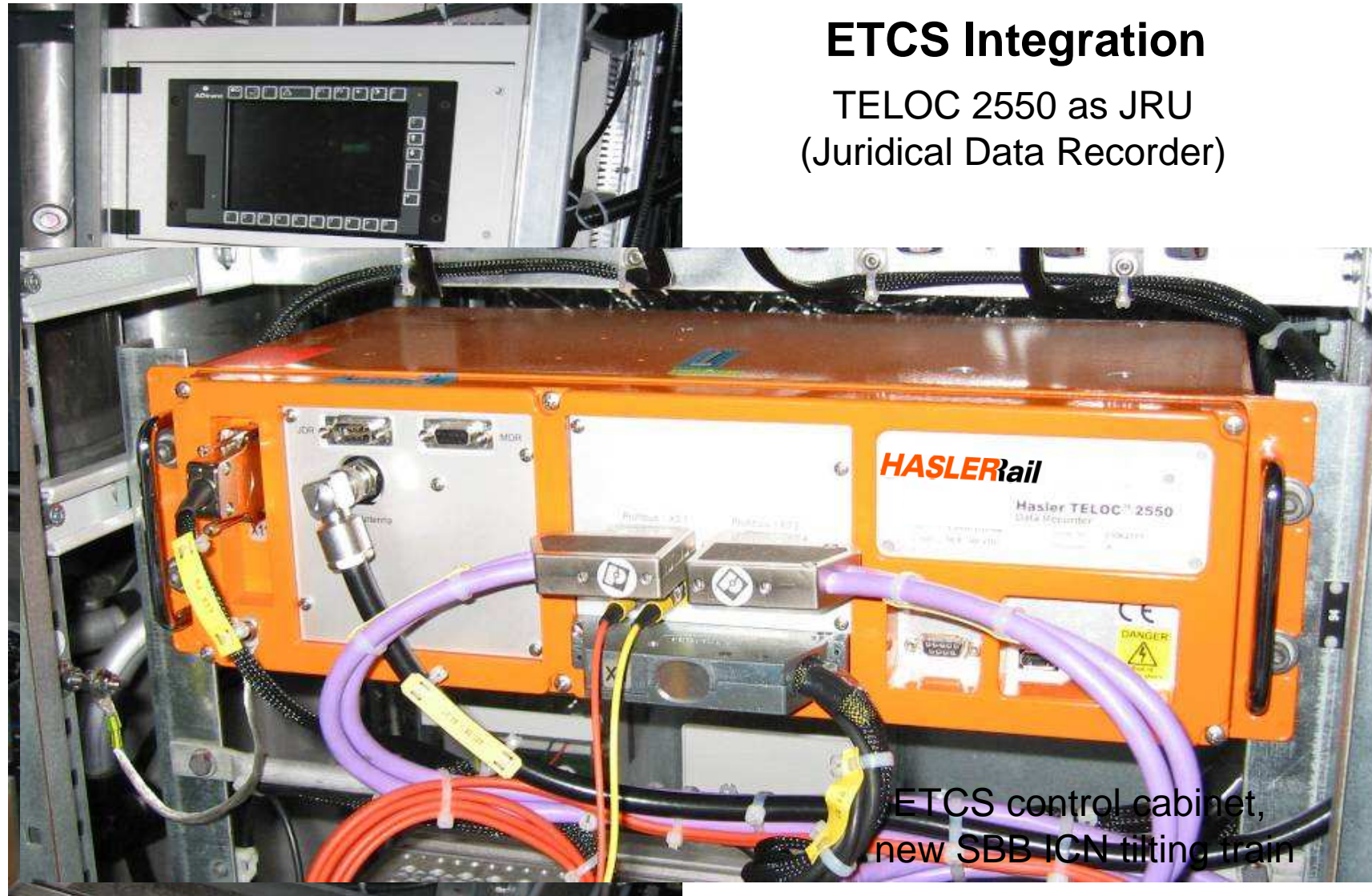


TELOC® electronic onboard event recorders:

- Modular
- Special functions:
 - GPS positioning
 - Voice recording
 - Wireless transmission
- ETCS integration (JRU)
- SIL 2 to SIL 4 safety applications
 - Dead man control, roll back protection, zero speed detection

ETCS Integration

TELOC 2550 as JRU
(Juridical Data Recorder)



ETCS control cabinet,
new SBB ICN tilting train

HaslerRail reasons to introduce IRIS standard:



- ✦ HaslerRail entirely depends on the railway industry.
- ✦ HaslerRail priority is safety and security in the railway industry. With the IRIS certification we emphasize this commitment.
- ✦ IRIS supports the continuous improvement of our products and our processes, which are key points in our strategy.
- ✦ A systematic risk assessment process has been introduced to improve the transparency in projects.
- ✦ As ISO standards do not cover certain aspects of our business, such as RAM / LCC calculations, we envisage future standardisation with our customers.
- ✦ We expect to simplify supply chain processes together with our customers.

IRIS ➤
Certification



Main difficulties encountered during the preparation for certification:

- Being a small company with limited resources was not an advantage as IRIS requested more documentation processes in comparison to ISO 9001.
- The required administrative work load was difficult to manage with the company's existing workforce and normal daily tasks suffered in the process.
- The standard is still young, and therefore only preliminary documents were available during preparation.
- After the official release of the standard, only limited time was given for the preparation and certification.
- No experience could be obtained from other small companies for the introduction.
- Certain documents were not yet translated into German.

IRIS
Certification



Project key figures:

- Project start: 1 January 2006 (Decision by HaslerRail's management)
- Certification audit held on 14 June 2006
- Open IRIS CAR's after audit: 5
- Certified on: 14 August 2006
- Costs:
 - Internal: 55 kEUR
 - External: 10 kEUR

IRIS ➤
Certification



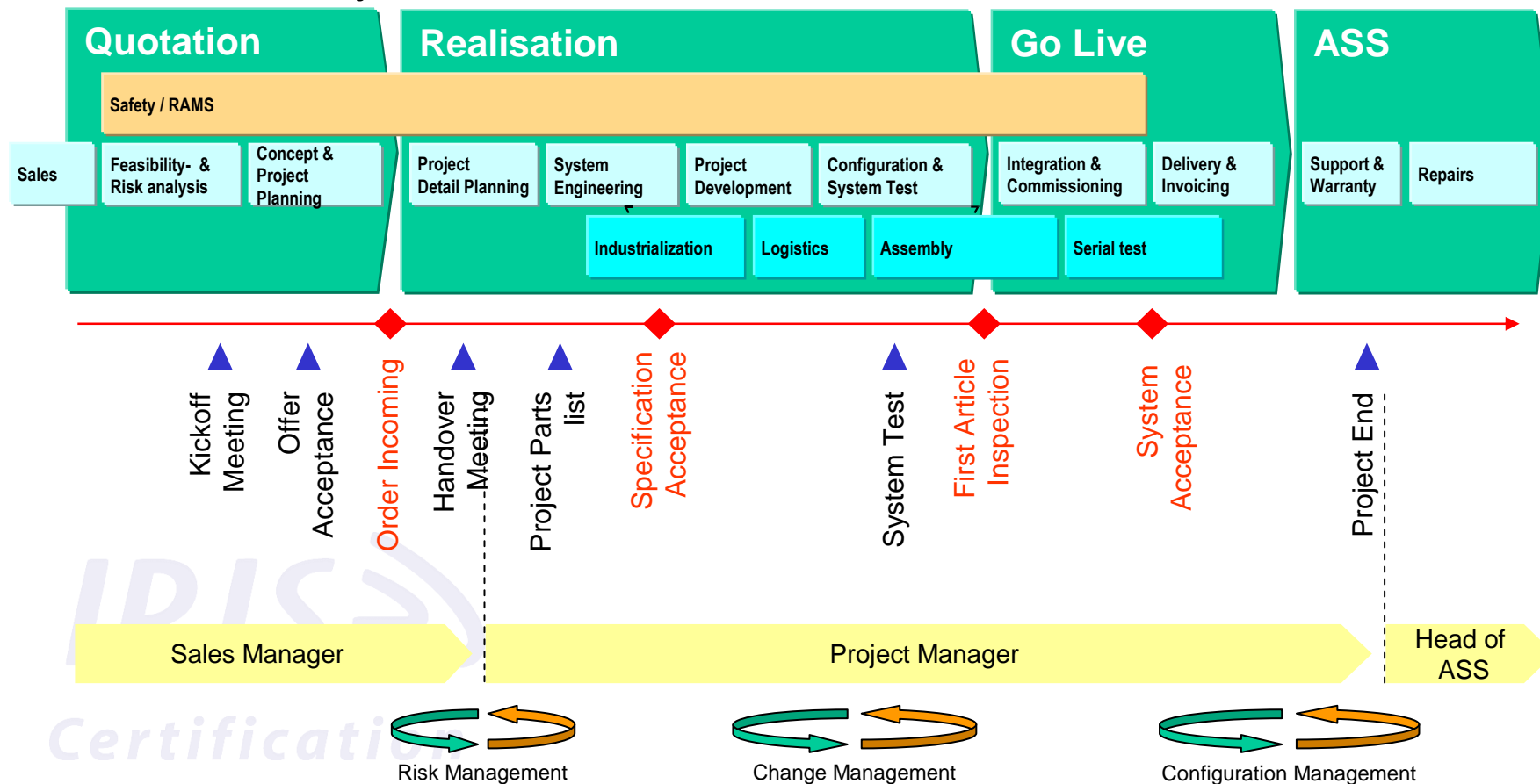
Particular aspects that we heeded during IRIS implementation:

- Careful attention was given to our main processes:
 - New Vehicle Process (signalling & platforms)
 - Vehicle Modernisation Process (refurbishment)
- Additional work was requested for:
 - Supplier evaluation / certification process
 - RAMS, LCC process and risk assessment
- Information politics
 - Extensive effort was made to motivate employees

Support tools used for documentation:

- Microsoft SW packets
- SYCAT SW for process visualisation (still in introduction phase)

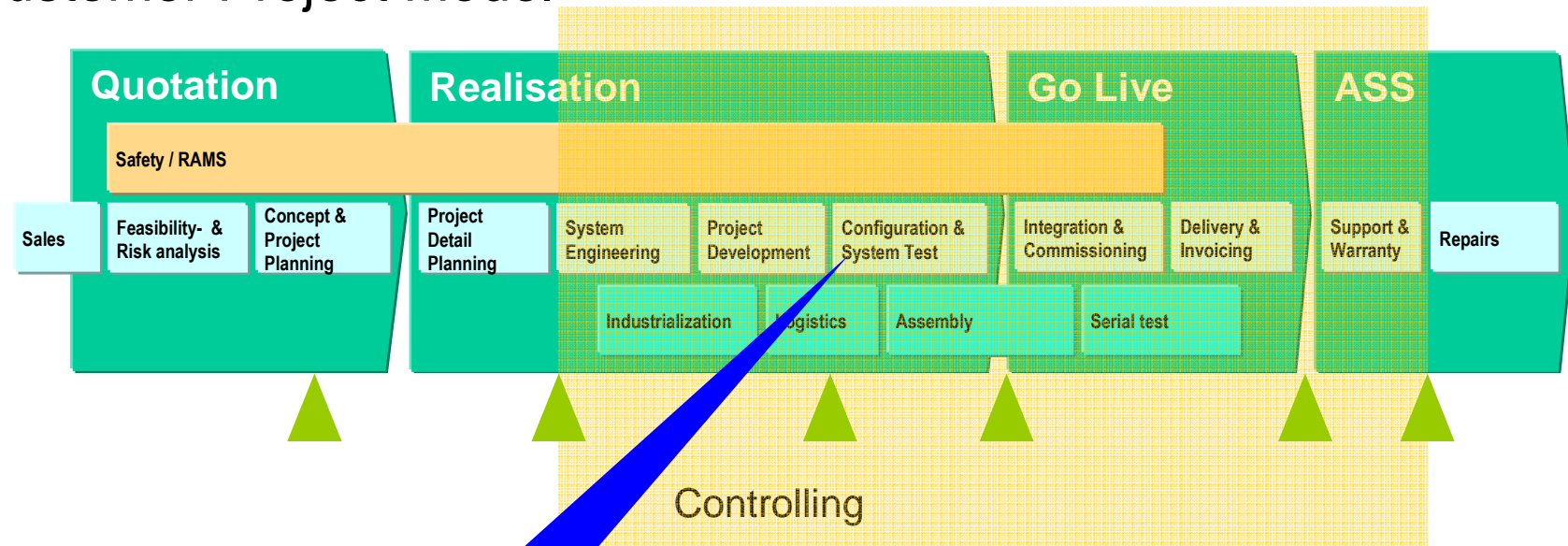
Customer Project Model:



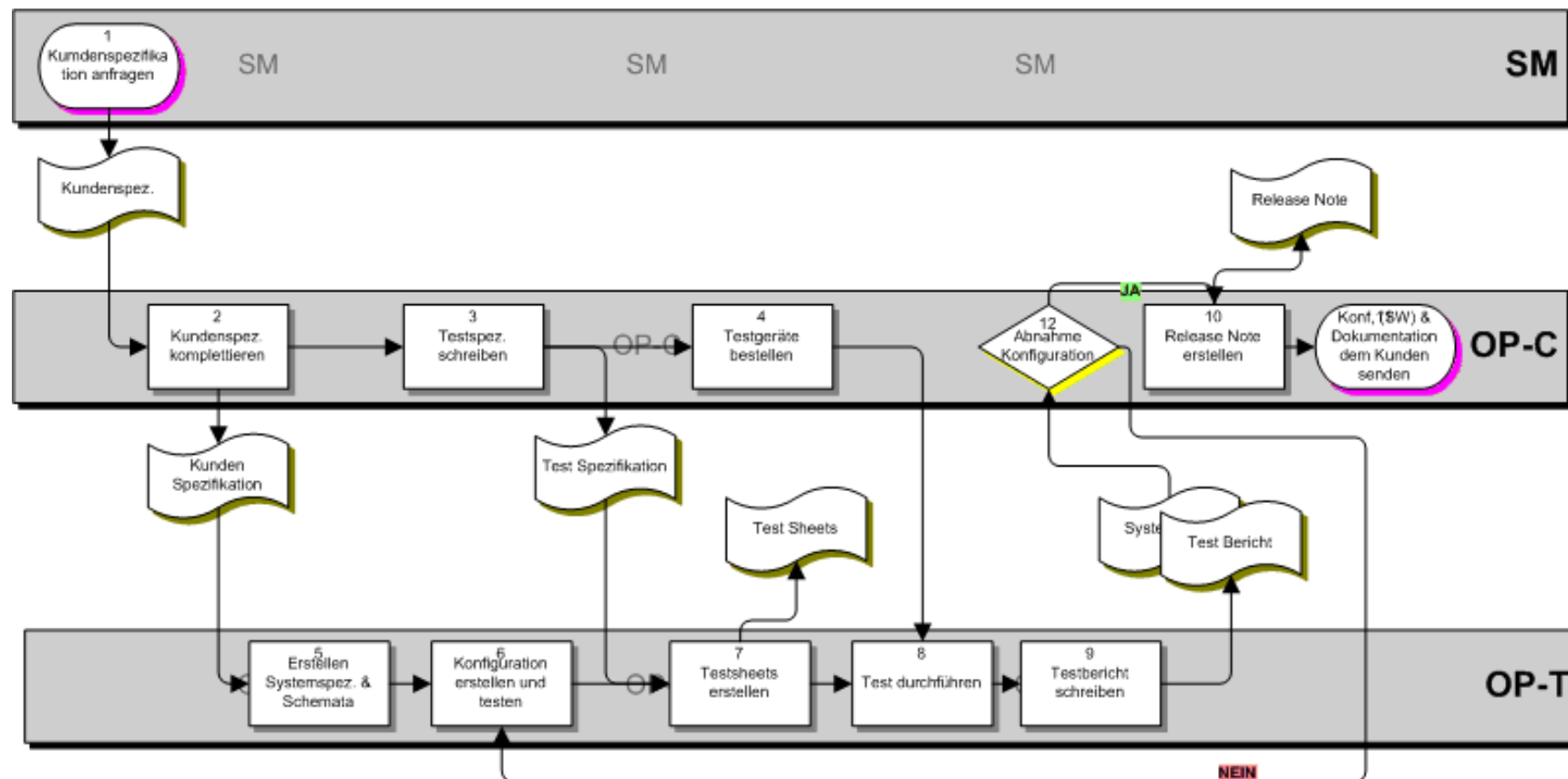
Tollgates: Interaction between the customer and HaslerRail, these are criteria's allowing to move to next step

Milestones: Internal planning points to keep and control due dates

Customer Project Model



On top controlling is applied as a support process





Next steps:

- System fine tuning
- Training lessons for employees
- Establish an improved and simplified system to quantify progress
- Introduce score board presentation for results
- Transfer the system's documents to the SYCAT SW tool
- Internal audits

IRIS ➤
Certification



Some final recommendations:

- ✦ Pay attention to KO factors!
- ✦ Plan training sessions for employees, so that they can understand the differences between IRIS and ISO 9001!
- ✦ Project management is a key function, therefore test it carefully!
- ✦ Keep it simple!

IRIS 
Certification

Good luck!